



OSIRIS SKID PLATE INSTALL INSTRUCTIONS

Once you receive your new Osiris Skid Plate you should have these parts:

- 1 Aluminum Skid Plate
- 2 Blue Steel Front Brackets
- 3 8x30mm Bolts
- 5 10x30mm Bolts
- 3 Hexagon Rivet-nuts
- 2 8mm Lock Nuts
- 5 8mm Flat Washers
- 3 8mm Lock Washers
- 5 10mm Fender Washers
- 1 10mm Star Washer
- 1 10mm Small OD Flat Washer
- 5 10mm Lock Washers
- 2 10mm Polyethylene Spacers
- 1 Aluminum Rivet-nut Install Tool

Tools You Will Need:

- Driver with 12 Inch Extension with Wobble End
- Metric Socket Set with Normal and Deep Sockets
- Torque Wrench
- Set of Large Metric Wrenches and Vise Grips
- Car Ramps or Jack Stands with Jack
- Never Seize Compound
- Regular Lubrication Grease
- Torx T25 Screwdriver
- Torx T30 Screwdriver (TDI only)

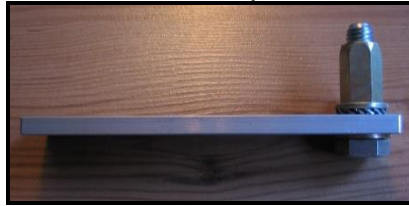
Now that you have familiarized yourself with the parts of the skid plate and prepared the tools you will need to do the job, you're ready to get started.

Please Read: In this install guide, I will be giving step by step directions on how to install just your new aluminum skid plate. If you own a TDI Diesel and wish to install the plastic skid plate on top of the aluminum skid plate you will need to make three minor cuts out of the plastic skid plate so the aluminum skid plate can easily bolt up to the lower sub frame of the car.

Step #1: Drive your car onto a set of ramps or jack your car up and place jack stands under your car. Also put your emergency brake on and block the rear tires (we recommend using both the ramps and the jack stands). Start by removing all of the Torx T25 & 30 screws holding the plastic skid plate onto the car. Remove the stock plastic skid plate.

Step #2: Now you will be installing the three rivet nuts on the upper front frame rails. This kit requires one rivet nut to be installed on the drivers upper front frame rail and two on the passenger upper front frame rail. Start by assembling your rivet nut installation tool by taking the 10mm small OD flat washer and sliding it onto one of the 10mm bolts. Then insert the bolt through the hole of the 5" long rivet nut install tool. Now slide the 10mm star washer onto the bolt until it is against the tool. Next you will need to put some automotive grease onto the threads of the bolt for lubrication and then thread the hexagon rivet nut onto the bolt so it looks just like the following picture.

Picture A: Rivet nut install tool fully assembled and ready to go.



Starting with the driver's side upper front frame rail, locate the hexagon shaped hole in the frame as seen in the following picture. This is where the first rivet nut will be installed.

Picture B: Drivers side hexagon hole.



Now you will want to have your driver with 12" wobble head extension and 17mm socket on the end ready to go. Take your assembled rivet nut tool and insert the rivet nut into the hexagon hole in the frame. Next take your driver and tighten the bolt to a minimum of 25 lb-ft. Make sure that the head of the rivet nut stays tight and flush against the frame. Also before tightening the bolt, the rivet nut tool will need to butt up against the stationary bolt that protrudes down from the frame just like in the following picture. When you have finished tightening to 25 lb-ft, start to remove the bolt while holding the install tool making sure it does not turn. Completely remove the bolt and install tool so the rivet nut is the only piece of hardware left seated in the frame. The rivet nut should be tight in the frame and not able to rock or spin.

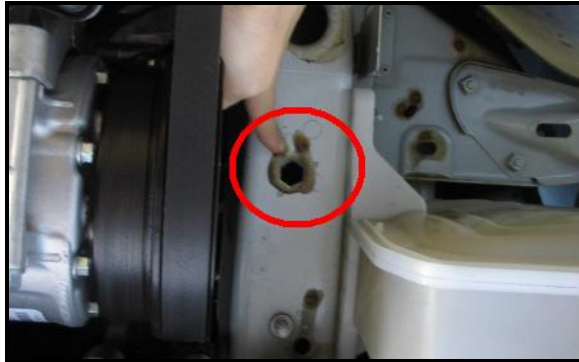
Picture C: How to install the rivet nut.



***Note:** If you don't have a 12" wobble head extension, you can remove both plastic side skirts instead. Removing them will give you full unrestricted access to the frame rails and can make the installation easier. There will be at least 8-10 Torx T25 screws holding each one on. This will make the install a little longer but may be the best option for some people.

Set #3: Now you will need to install the last 2 rivet nuts on the passenger side frame rail. Assemble the rivet nut tool with the next rivet nut just like before. Locate the 2 hexagon holes in the passenger side upper front frame rail as seen in the following picture. Install the rivet nuts exactly like you did in step #3.

Picture D: Showing one of the passenger side hexagon holes.



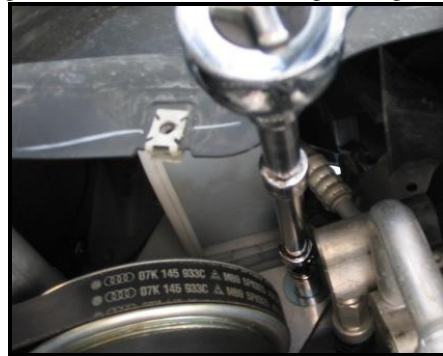
Step #4: Next you will be installing the driver's side bracket on the frame rail where you installed the first rivet nut. Take one of your 10x30mm bolts and slide a 10mm lock washer onto it as well as a 10mm flat washer. Take some of your Never Seize compound and put a generous coating onto the threads of the bolt and place it near by. On the drivers side frame rail there will be two threaded studs hanging down that have a plastic dust cap on them. Remove the dust caps and place them off to the side. Now take the bracket that has three holes in the top plate and slide the bracket into position so the front and back holes slide over the 8mm studs that hang down. Then take your assembled 10x30mm bolt and thread it hand tight through the center hole into the rivet nut. Apply Never Seize compound onto the two 8mm threaded studs that hang down from the frame rail. Next you will need to slide an 8mm flat washer onto each stud and then thread an 8mm nut onto the two studs as well. Thread the nuts by hand up to the top of each stud and then tighten them to 15 lb-ft using a deep socket. Now tighten the 10mm bolt to 25 lb-ft.

Picture E: Drivers side bracket fully installed.



Step #5: Now you will be installing the passenger side bracket. Get 2 of the 10x30mm bolts ready with the lock washer, flat washer and Never Seize compound on the threads just like in the last step. Take the other bracket and put it in position so that both holes in the bracket are over the two rivet nuts. Now take your 2 assembled 10x30mm bolts and thread them by hand into each rivet nut until it is snug. Now tighten the 10x30mm bolts to 25 lb-ft.

Picture F: Showing the driver with extension tightening one of the 10mm bolts.



Step #6: Now take the last two 10x30mm bolts and three 8x30mm bolts and put a lock washer, flat washer and Never Seize compound on the threads and place them within reach to install the skid plate. Take the skid plate with the stamp saying EVOLUTIONIMPORT.COM to the front of the car, lift the skid plate up into place and line up the drivers hole at the front with the bottom of the bracket. Take one of the 10x30mm bolts and thread it 3 turns into the bracket. Next line up the rear holes with the 8mm holes in the sub frame and place the two white Polyethylene washers between the skid plate and sub frame on the drivers and passengers side only. The center 8mm hole does not require a spacer. Now thread all three 8mm bolts three turns into the sub frame. Now install the 10x30mm bolt into the passenger side bracket. Once all the bolts are in place, simply tighten by hand until they are snug. 25 lb-ft will be plenty tight enough for the 10mm bolts and 15 lb-ft for the 8mm bolts.

Congratulations, you are done.

If you have any questions or concerns while installing this skid plate, please only contact the distributor you bought it from or ourselves as we are by far the most qualified to answer your questions. 250-963-3232

Copyrighted by: Evolution Import Inc
Not to be distributed